



London City Airport Airport Transport Forum 2003





Agenda

1. Welcome & Introductions
2. Update since 2002 ATF
3. DLR Extension to LCY
4. Bus Services in East London
5. Upgrade to A13
6. Thames Gateway Bridge
7. LCY Staff Travel to Work Survey
8. Discussion on Future of ATF
9. Any Other Business
10. Date of Next Meeting



**London City Airport
Airport Transport Forum 2003**

Update on Surface Access



**Alan Medlock
Operations Director**



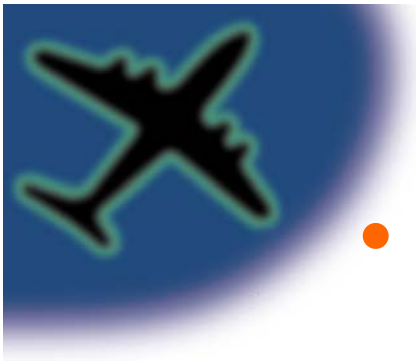
Surface Access Team

- Operations Director – Alan Medlock
- Head of Customer Services – Nigel Tarr
- Terminal Manager – Tim Smith
- Environment & Planning Manager – Rob Grafton
- Community Affairs – Eleanor Mclaurin
- Taxi Co-ordinator – Roy Collins
- Long Term Strategy Manager – Janet Goulton



Key Objectives of the ATF

- To make access to airports more sustainable,
- To draw up short term and long term targets for increasing the use of public transport by passengers and staff,
- To devise a strategy for meeting these targets, for incorporation in Local Implementation Plans for the London Integrated Transport Strategy,
- To monitor implementation of the strategy.



Surface Access Strategy

- Encourage the use of public transport for journeys to and from the airport (staff and passengers),
- Offer a choice of efficient public transport,
- Ensure access for the disabled,
- Ensure access for employment,
- Contribute to regeneration.



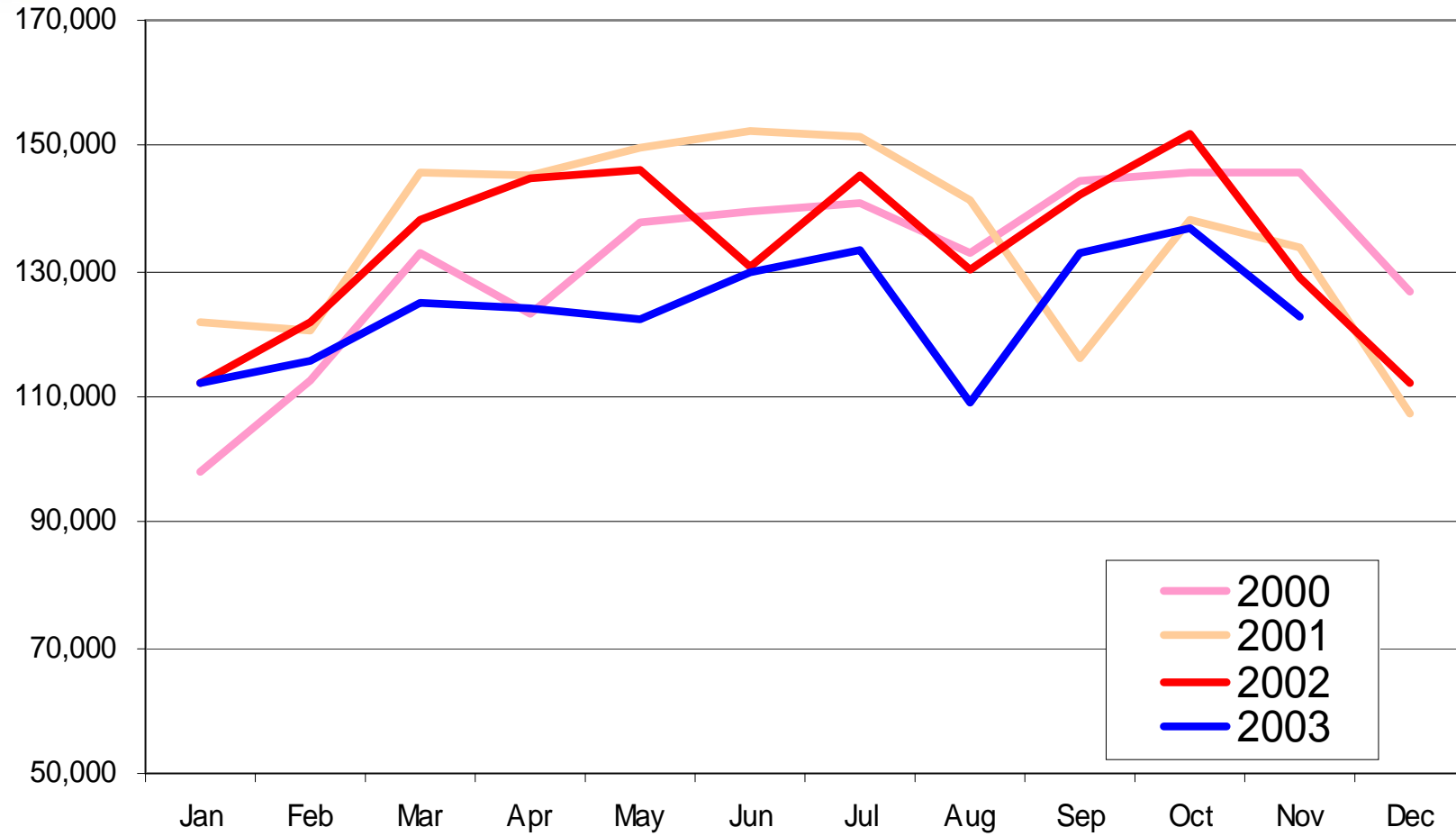


Airport Transport Forum - Participants

- Local authorities
- Regional planning bodies
- Infrastructure providers
- Transport operators
- Airport representatives
- Local businesses
- Other interested parties.



Monthly Passengers



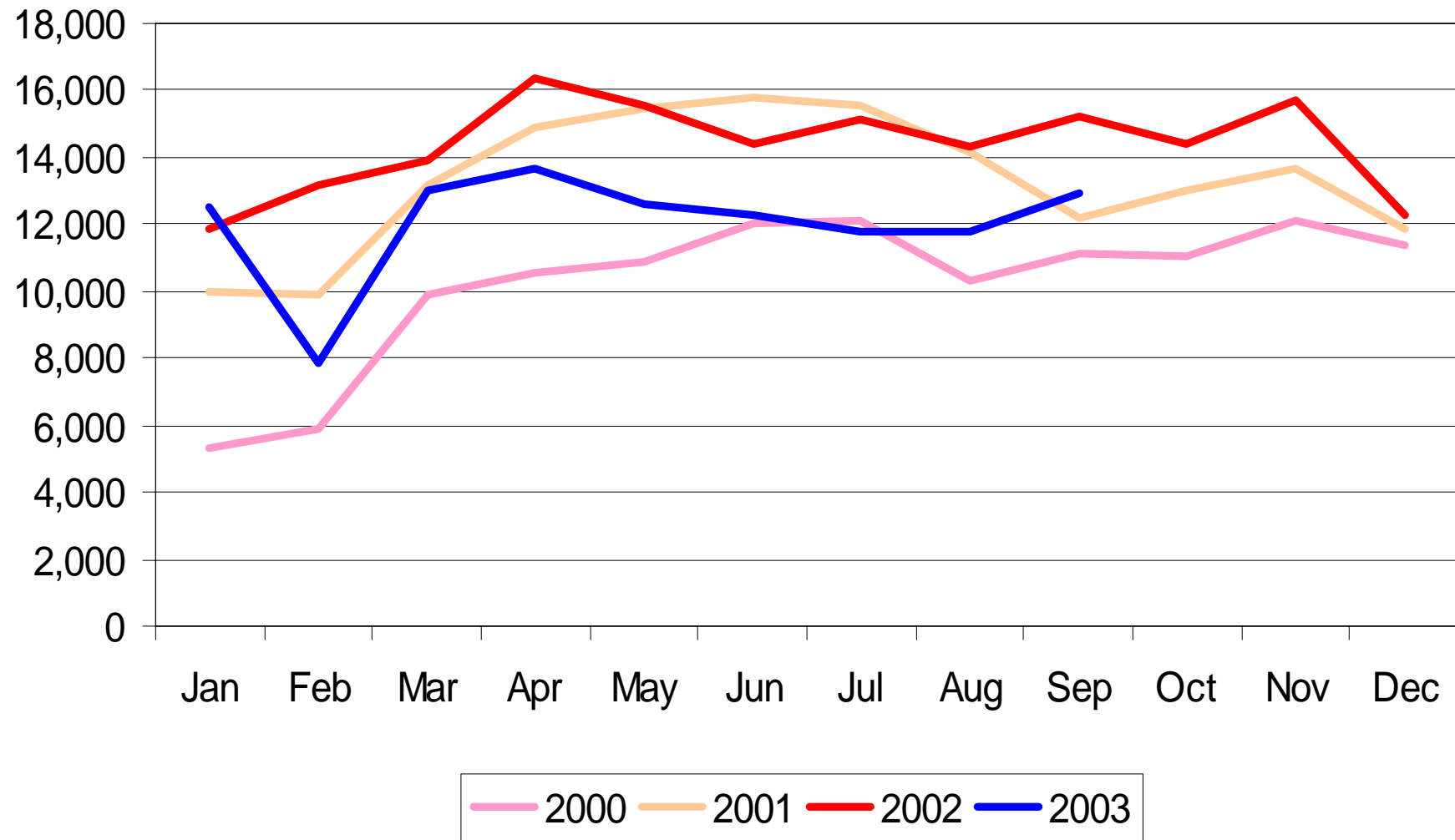


ROUTE CHANGES OVER PREVIOUS 12 MONTHS

<u>Stopped</u>		<u>Started</u>	
Munich	Jan-03		
Munchengladbach	Feb-03		
Hamburg	Mar-03	Leipzig	Mar-03
Belfast	Mar-03	Paris (BA)	Mar-03
Berlin	Mar-03	Frankfurt (BA)	Mar-03
		Swansea/Cardiff	Apr-03
		Glasgow (BA)	May-03
Basle	Jun-03		
Geneva	Aug-03		
		Cork	Sep-03
Glasgow (BA)	Oct-03		
Dublin (EI)	Oct-03	Geneva (BA)	Oct-03
		Edinburgh (BA)	Oct-03
		Dublin (AF/WX)	Oct-03
		Bremen	Nov-03
		Luxembourg (Luxair)	Nov-03

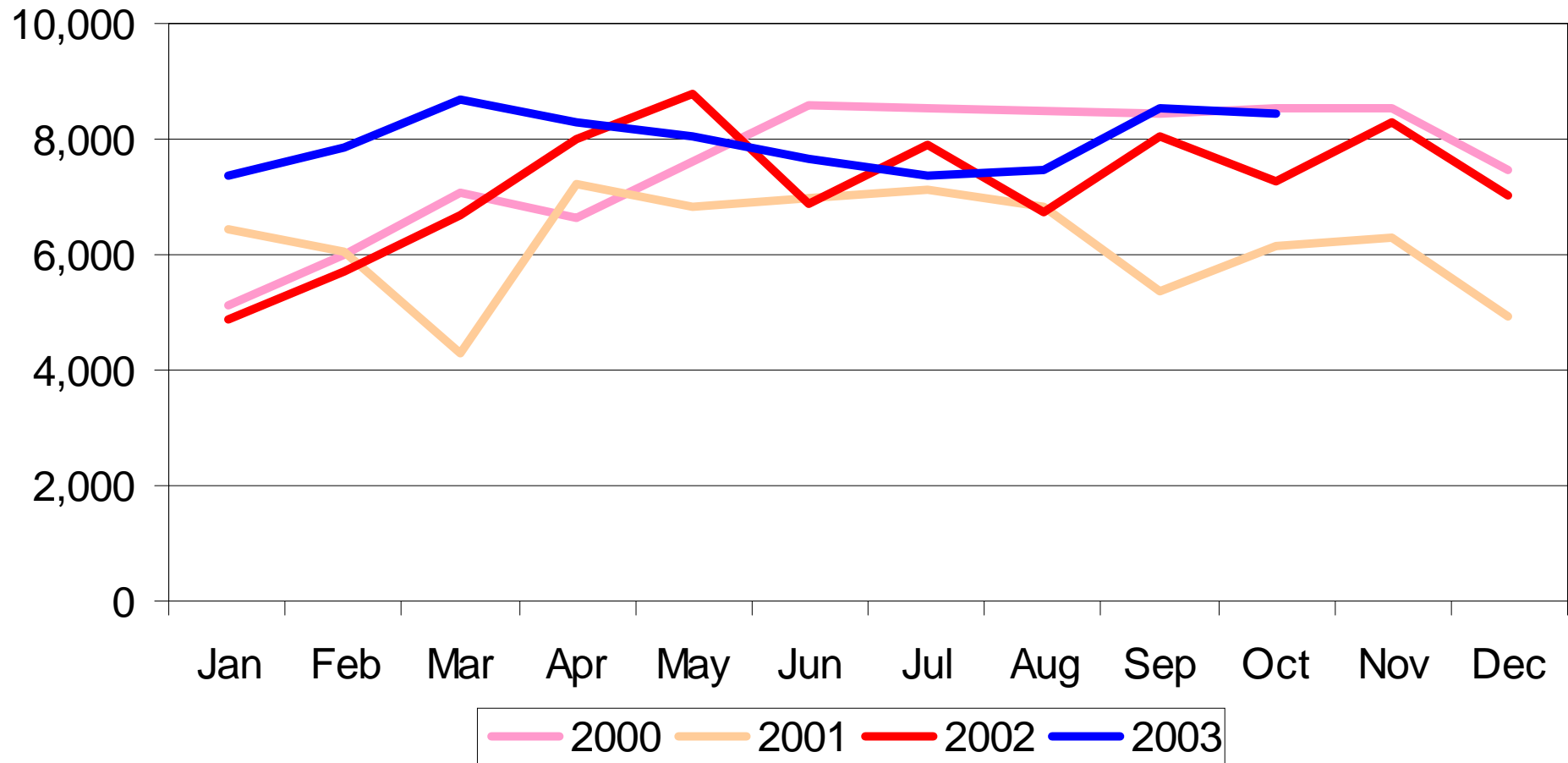


Canning Town Shuttle Bus 2000-2003 passenger comparison



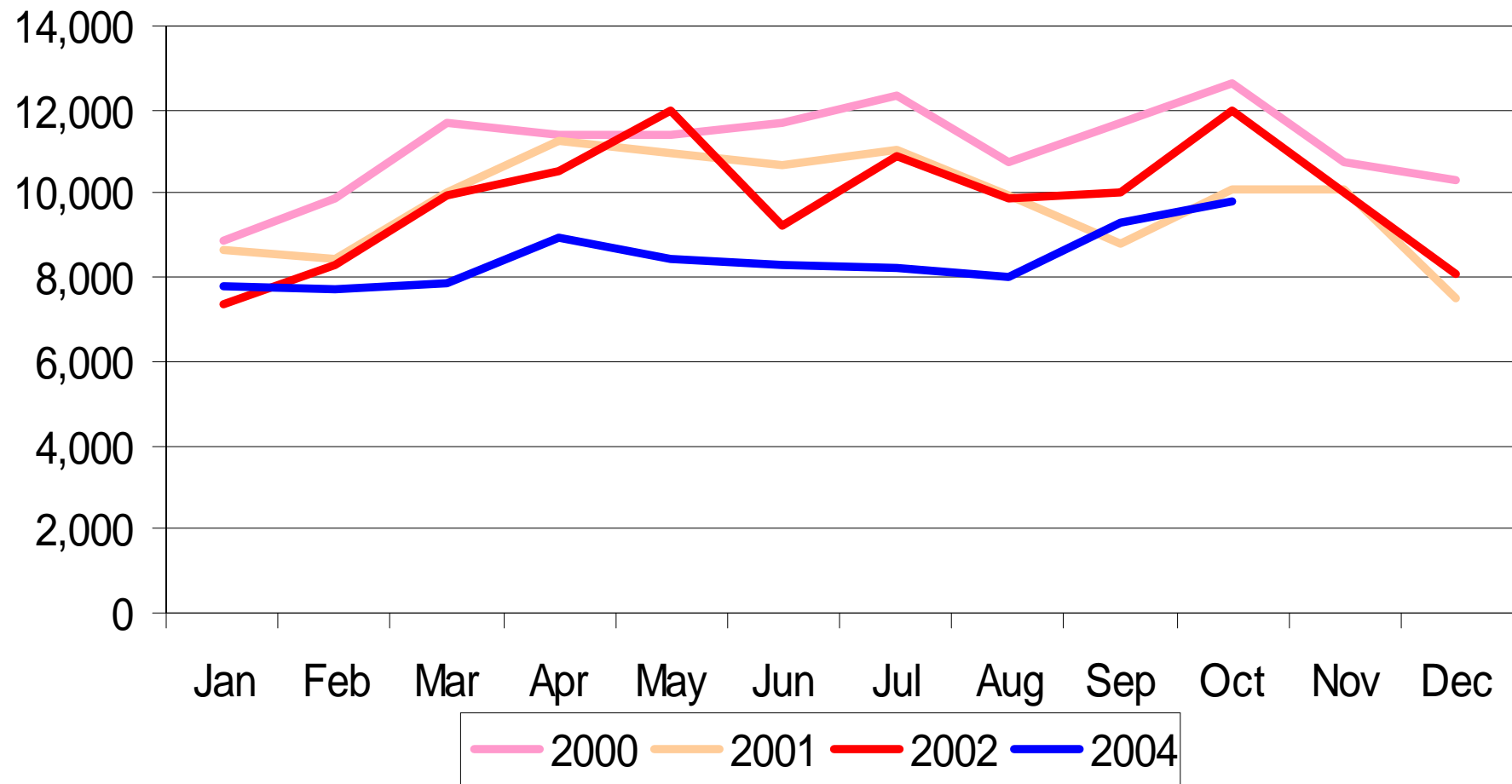


Canary Wharf Shuttle Bus 2000-2002 passenger comparison





Liverpool Street Shuttle Bus 2000-2002 passenger comparison





**Any
Questions?**

